

# DAILY DART

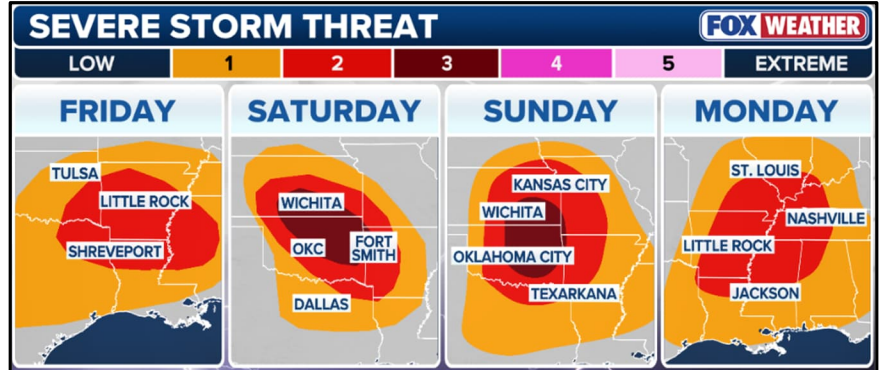
WSP USA INSPECTION SERVICES DISASTER AWARENESS REPORT

April 23, 2026

## Severe Storm Threat

### Plains

- Severe thunderstorms, some capable of producing tornadoes, are threatening a corridor that spans more than 1,000 miles from Minnesota to Texas.
- Thursday's severe weather threat has increased, now up to Level 3 out of 5 across south-central Kansas, including Wichita, according to NOAA's Storm Prediction Center.
- A broader Level 2 threat stretches from southern Minnesota to northern Oklahoma, placing more than 35 million people in the path of some kind of severe storms.
- These dangerous thunderstorms will evolve across two main theaters: the Midwest and Central Plains, and the Oklahoma and Texas Panhandles.
- Supercell thunderstorms capable of producing hail 2 inches in diameter, as well as strong tornadoes (EF-2+) could form in the mid-afternoon on Thursday and early evening hours, with the greatest risk expected across eastern Kansas.
- A second storm could trigger storms to form in western Oklahoma and parts of North Texas in the afternoon and produce large hail and few tornadoes, with supercells possible in the late afternoon and evening hours.
- Severe weather is expected to continue through the weekend with storms targeting the Southern Plains, the Mid-Mississippi Valley and the Deep South.



## Flood Activity

### Michigan

- Officials trying to get a handle on just how bad the damage is throughout the state are asking Michiganders — especially business and property owners.
- Forty — nearly half of the state's 83 — counties are now under a state of emergency, with the governor on Monday, April 20, adding two more counties in the Upper Peninsula to the list.
- Many northern Michigan communities are swamped, with muddy floodwaters leaving all but the rooftops of homes visible. Roadways and bridges are submerged and washed out entirely.
- Large chunks of ice rammed into homes along Michigan's Black Lake in the northeastern Lower Peninsula as constant spring rainfall and winter melt left many homes flooded and threatened to overflow stressed dam systems.
- "Black Lake, Black River, Cheboygan River, Burt Lake, Mullett Lake, the Sturgeon River - and nearly every waterway in the county - have overflowed beyond their banks, swallowing docks, roads, yards, and in far too many cases, homes," the Cheboygan County sheriff's office told residents last week.
- In some areas, people are still in danger with more storms on the way.

1

The Daily DART is a publication of WSP USA Inc. All rights are reserved.

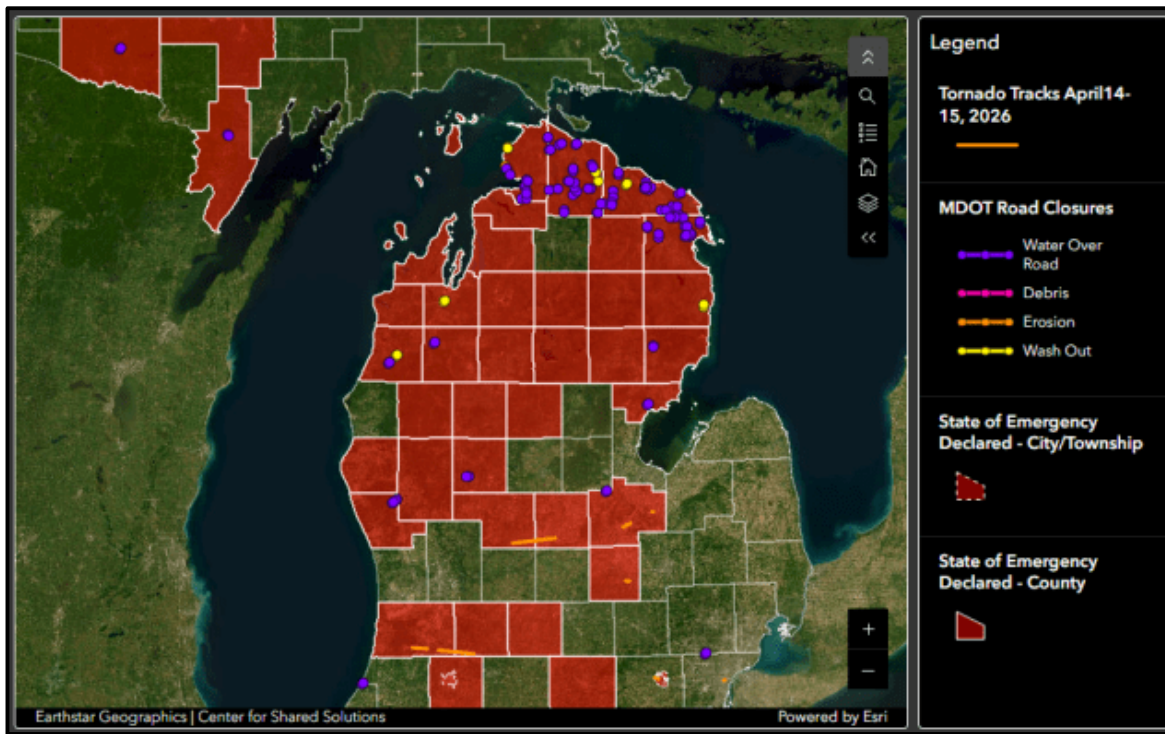
Any unauthorized use, disclosure, viewing, copying, alteration, dissemination or distribution without permission is strictly prohibited.

# DAILY DART

WSP USA INSPECTION SERVICES DISASTER AWARENESS REPORT

April 23, 2026

- Forecasters predicted flooding would persist in parts of the U.P. throughout the week, the Daily News in Iron Mountain reported Tuesday, April 21, as snow — which has been gone in metro Detroit for weeks — is still melting farther north and rivers continue to swell.
- Bridges and roads have been closed, and more rain and storms are coming on Thursday and Friday, followed by temperatures in the 60s, which could add to whatever snowmelt is left.



## Pending Individual Assistance Declaration Requests

State	Event	Date Submitted	Approved/Denied/Pending	Number of Counties/Tribes
MI	Severe Storm & Tornadoes March 6, 2026	4/1/2026	Pending	3 Counties
CNMI*	Typhoon Sinlaku	4/19/2026	Pending	Commonwealth-wide

\*Award of task order to contractor pending

# DAILY DART

WSP USA INSPECTION SERVICES DISASTER AWARENESS REPORT

April 23, 2026

## WSP USA Inspection Services Active Disasters

Disaster Number and State	Disaster Type	Number of Counties Declared	Days Since Launch	Registration Deadline
4899 - MS	Severe Winter Storm	36 Counties	5	6/10/2026
4909 - HI	Severe Storms, Flooding, Landslides/Mud-slides	3 Counties	1	6/14/2026

### WSP USA INSPECTION SERVICES ACTIVITY

